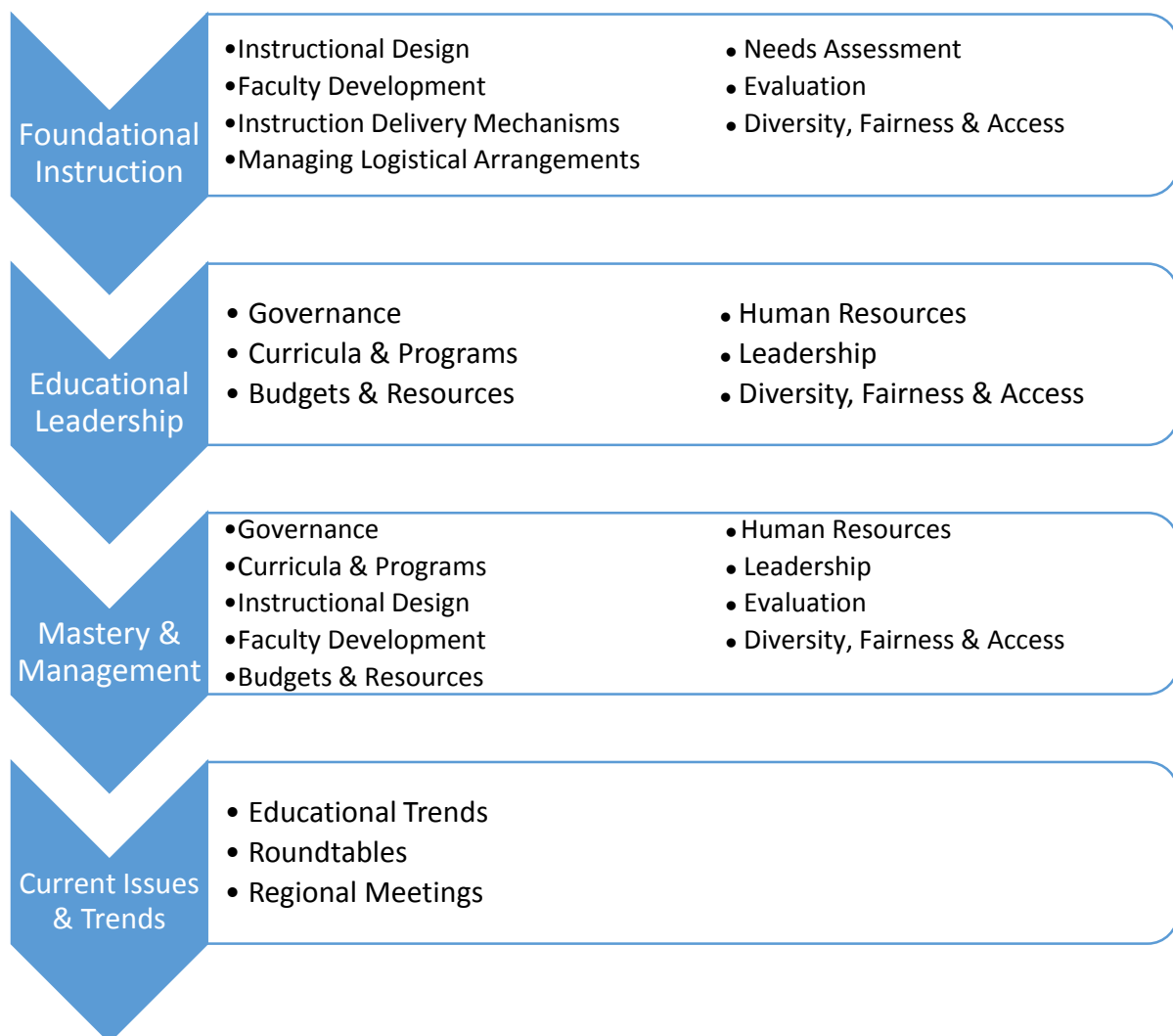


Use of the curriculum-based education by our organization will increase judicial branch educators' competencies and thereby, advance our profession as a whole by providing relevant resources and establishing a common vocabulary and professional identity for NASJE.

NASJE members can self-tailor professional development based on their specific needs by tracking and rotating through all competency areas at their own pace.

The Annual Conference Committee and selected faculty can offer curriculum and needs-based education each year to NASJE members. Webinars are another source for providing curriculum-based education to members.

NASJE's core competencies do not represent a specific sequence of content study or even a recommended path of study for those in the field. They are aspirational not instructional.



- Instructional Design
- Faculty Development
- Instruction Delivery Mechanisms
- Managing Logistical Arrangements
- Needs Assessment
- Evaluation
- Diversity, Fairness & Access

Foundational  
Instruction

- Governance
- Curricula & Programs
- Budgets & Resources
- Human Resources
- Leadership
- Diversity, Fairness & Access

Educational  
Leadership



Current  
Issues

- Educational Trends
- Roundtables
- Regional Meetings

Mastery and  
Management

- Governance
- Curricula & Programs
- Instructional Design
- Faculty Development
- Budgets & Resources
- Human Resources
- Leadership
- Evaluation
- Diversity, Fairness & Access